



This route is a partnership between

- The Millennium Commission
- North Ayrshire Council
- Renfrewshire Council
- Scottish Executive
- Sustrans

Lochwinnoch Loop Line

This 14 mile cycleway and footpath forms part of the Lochs and Glens Cycle Route. It starts at Paisley Canal Railway Station and follows the same route as National Cycle Network Route 75 until Johnstone. From there it heads south west to Kilbarchan, Lochwinnoch and Kilbirnie, passing by Castle Semple Loch, Barr Loch and Kilbirnie Loch. Castle Semple Loch is a nationally recognised site for wild birds and a Site of Special Scientific Interest.



Paisley to
Kilbirnie
mainly
traffic-free
path for
cyclists
and
walkers

The Castle Semple Visitor Centre is an excellent location for water sports, walks, cycling and picnics. Boats and mountain bikes are available for hire. Following the line of a disused railway, the path is traffic-free except for short sections through Elderslie and Lochwinnoch. Near Kilbirnie, the route passes close to Glengarnock Station. There is wheelchair access to the whole route.

Sustrans - the sustainable transport charity - works on practical projects to encourage people to walk, cycle and use public transport in order to reduce motor traffic and its adverse effects. A map for the Lochs and Glens South Route (Carlisle to Glasgow) is available for £5.99 - Please call 0845 113 0065 or visit www.nationalcyclenetwork.org.uk

The National Cycle Network is a comprehensive network of safe and attractive routes to cycle throughout the UK. 10,000 miles are due for completion by 2005, one third of which will be on traffic-free paths - the rest will follow quiet lanes or traffic-calmed roads. It is delivered through the policies and programmes of over 450 local authorities and other partners, and is co-ordinated by the charity Sustrans.

www.nationalcyclenetwork.org.uk

For more information on routes in your area:
Sustrans 0845 113 0065
or visit the interactive mapping on our web site.

Lochwinnoch Loop Line

www.nationalcyclenetwork.org.uk

© Crown copyright. All rights reserved. Sustrans.
Licence No: GD03181G0001 March 2004

Legend

- on-road route
- - - traffic-free route
- railway (station)
- ▲ access point
- ▲ access control
- ▲▲▲ take special care on this section of route

facilities

- ☕ cafe, hotel or public house
- 🛒🚲 grocery shop, cycle shop or hire
- 🚻📧 public toilets, post office
- 📍 tourist information
- 📏 milepost

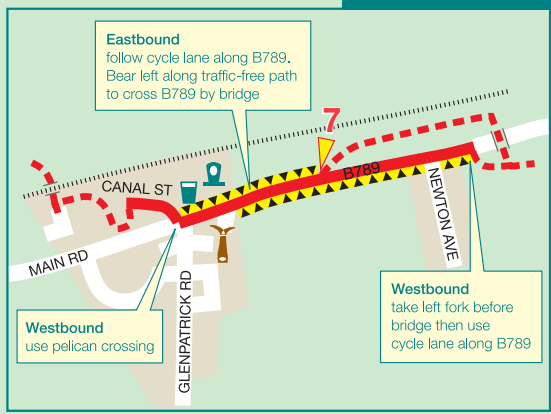
scale 0 1 mile



Access to Lochwinnoch Loop Line

- | | |
|---|--|
| 1. Camphill | 13. Barrhill Crescent |
| 2. Maxwellton | 14. Low Barholm |
| 3. Craw Road (for Royal Alexandra Hospital) | 15. Station Road |
| 4. Lounsdale Road | 16. Howwood link |
| 5. Green Road | 17. Castle Semples (at Visitor Centre) |
| 6. Fulbar Road | 18. Lochwinnoch park |
| 7. Hillhead (Elderslie) | 19. East Lochhead |
| 8. Miller Street | 20. Stoneyholm Road |
| 9. Barbush | 21. Glengarnock |
| 10. Barrochan Road | |
| 11. Milliken Park | |
| 12. Nether Johnstone | |

Elderslie detail



To Kilmarnock, Irvine & Ayr
Glengarnock